

BLAIR PARK WALKING AUDIT REPORT 2019

Safe Routes to Parks

Safe Routes to Parks is a project working to make walking, rolling, and biking to parks comfortable, safe, and easy. Working with community residents we hope to understand what prevents them from feeling safe on the way to a park that is within a 10-minute walk from their home. Using walk audits, residents identify problematic infrastructure that hinders accessibility to, and within, the parks. The information is shared with the city and the park district. Over the long term, the program seeks to increase park usage and improve health and wellbeing for all people in the community. In October 2019, we selected Blair Park as the central location of four routes.



Figure 1: Front entrance of Blair Park

Community Engagement

In order to engage the community, we reached out to the Urbana Park District and as well as various community Facebook groups, local schools and neighborhood associations. Seven community members participated in the walk audit conducted on October 8th and 15th at 5:30pm- 6:30pm. According to the Urbana Park District Parks and Facilities Map Chart, Blair Park is connected to MTD Bronze/Green and Red Bus Routes. It has: two ball diamonds, seven lighted tennis courts, shuffleboard, soccer goal, T-ball, a playground, restroom (April-October), open fields, paved path, drinking fountains, pavillion, a shelter, and flower beds.

Walk Audit

The walk audit was conducted by seven community members on October 8th and 15th at 5:30pm-6:30pm. There were five starting points selected: Pennsylvania & Lincoln, Urbana Middle School, Wiley Elementary School, Vine & Mumford, and Michigan & Race. The routes were selected because they were a 5-10 minute in every direction (North, South, East and West). They were also selected for their proximity to residential living areas.

Blair Park Walking Audit Routes:

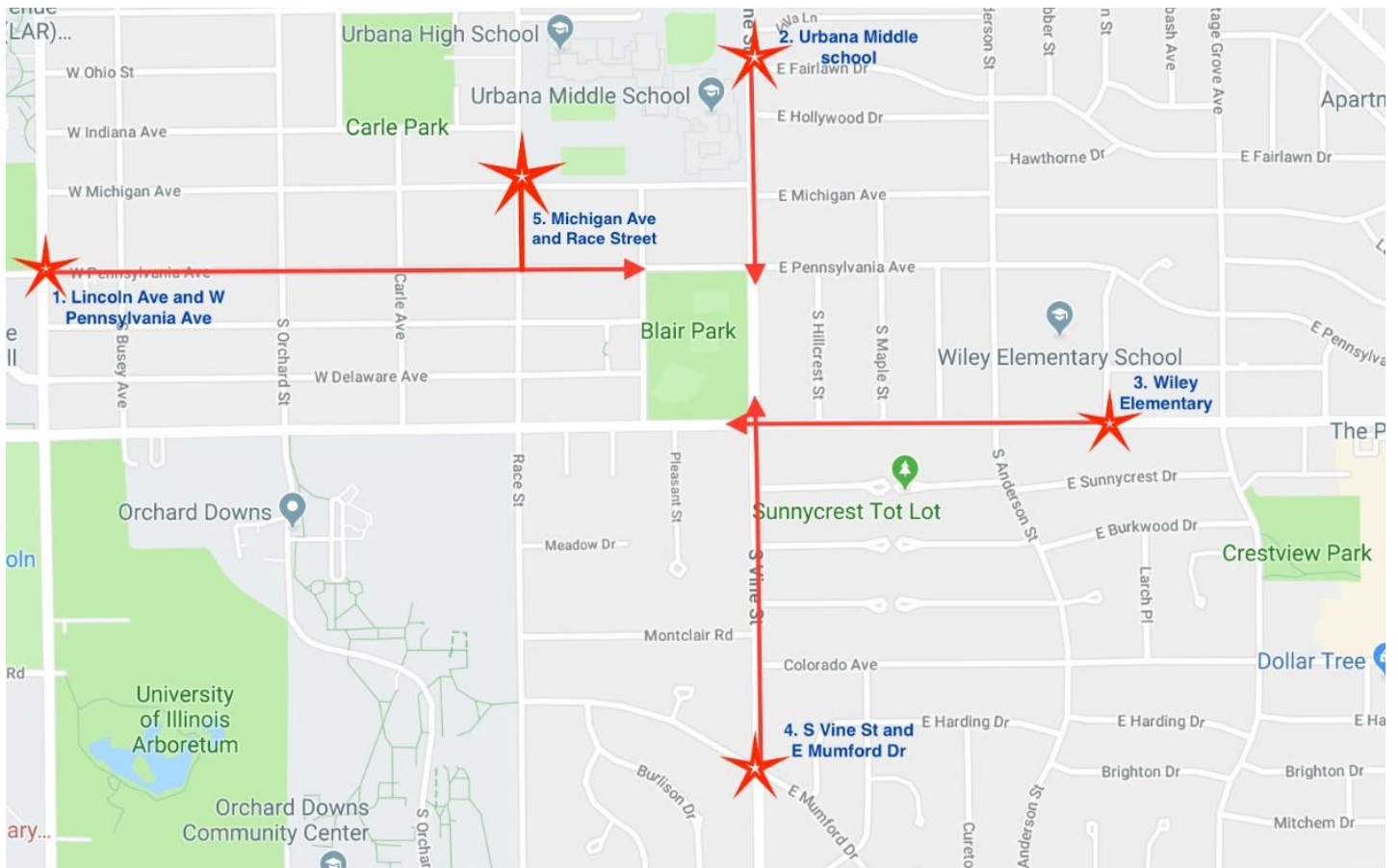


Figure 2: Location map of Blair Park

Blair Park Walking Audit Results:

Problems and opinions collected from the audit are further illustrated in this map, where blue line signifies walking directions to the park from four designated starting points and both red crosses and red lines mark location of safety concerns

https://drive.google.com/open?id=1Ec_qLhsoAINxg1VMTZZP7uhLObFwoBbp&usp=sharing

The uncolored section of the chart shows the general information throughout the route, and the green indicates issues at specific crosswalks.




Route 1: Pennsylvania and Lincoln							
	Sidewalks		Crossings		Safety	Comfort	Park Features
General	Sidewalks broken throughout the route				Drivers appear to be speeding	Multiple street lights	No walking/bike paths throughout the park
Broadway and Pennsylvania			No Crosswalks				
Pennsylvania ave and Orchard street	Blocked sidewalk from overgrown landscaping						
Route 2: Urbana Middle School							
	Sidewalks		Crossings		Safety	Comfort	Park Features
General	Sidewalks not wide enough				Speeding along Vine	Good Street Lighting, Nice shade on route	Great appearance and nice park features
Vine + Michigan	Small Cracked area. Small raises in sidewalk too (see picture)	Sidewalk narrows along vine after crossing Michigan.	No Signals, but good crosswalks				
Pennsylvania + Vine			No Signals	No Crosswalk			
Route 3: Wiley Elementary							
	Sidewalks		Crossings		Safety	Comfort	Park Features
General					Cars speeds are too fast and little to no street lights		Lovely Park
Florida and Anderson	Sidewalks are broken and cracked (506 Florida Ave)		No crosswalk		Difficult for bikers and walkers to cross the street safely Too much traffic and speeding cars		
Florida and Vine			No crosswalk				
Route 4: S. Vine St. & E. Mumford Dr.							
	Sidewalks		Crossings		Safety	Comfort	Park Features
General					Drivers appear to be speeding, Street lights are few.		
Burkwood and Vine	Plants obstructing sidewalk, low hanging trees.						
Colorado and Vine	Overgrown landscaping	Sidewalk not wide					
Montclair and Vine			No Crosswalk				
Route 5: Michigan Ave. & Race St.							
	Sidewalks		Crossings		Safety	Comfort	Park Features
General					Cars speeding on Race street throughout		No walking/bike paths that connect park entrances
1308 Race	Sidewalks broken and cracked						
Pennsylvania and Race	No ramp		No Crosswalk	No curb ramps for wheelchairs or strollers			
Michigan and Race			No Crosswalk				

Figure 3: Results from walk audit

Route 4: S. Vine St. & E. Mumford Dr.									
	Sidewalks			Crossings			Safety	Comfort	Park Features
General							Drivers appear to be speeding, Street lights are few.		
Burkwood and Vine	Plants obstructing sidewalk, low hanging trees.								
Colorado and Vine	Overgrown landscaping	Sidewalk not wide							
Montclair and Vine			No Crosswalk						
Route 5: Michigan Ave. & Race St.									
	Sidewalks			Crossings			Safety	Comfort	Park Features
General							Cars speeding on Race street throughout		No walking/bike paths that connect park entrances
1308 Race	Sidewalks broken and cracked								
Pennsylvania and Race	No ramp		No Crosswalk	No curb ramps for wheelchairs or strollers					
Michigan and Race			No Crosswalk						

Suggestions

Recommendation for infrastructure issues:

- Remove blockages from the sidewalk and examine poorly maintained landscaping
- Add pedestrian activated signals / marked crosswalks / stop signs as needed at suggested locations
- Add streetlights where needed (Vine & Mumford)

Advice for Blair Park:

- Put signage for direction to the park

Suggestions to improve the audit:

- Provide information on where to meet on surveys and sign-up sheets if possible
- Engage in more community outreach

Appendix



Figure 4: Pennsylvania ave and Church st.



Figure 7: Vine and Mumford #1



Figure 5: South of UMS on west side of Vine before Pennsylvania

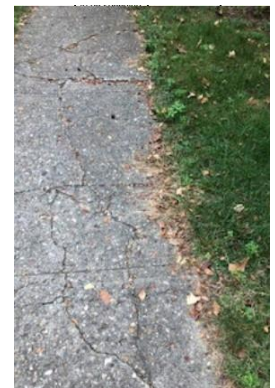


Figure 8: Vine and Mumford #2



Figure 6: 506Florida



Figure 9: Vine and Mumford #3